

# INSTRUCTION MANUAL

## ATTENTION:

- Please read these instructions carefully before operating this appliance.
- The temperature is thermostatically controlled between the range of 50°C to 300°C (122° F to 572°F). A signal lamp adjacent to the thermostat indicates when the heating elements are energized.

## IMPORTANT:

- These units are designed to operate on alternating current (A.C.) only.
- DO NOT CONNECT TO DIRECT CURRENT (D.C.)**.
- Care should be taken when operating this appliance as **HOT SURFACES** may cause burns.
- Ensure that the power supply cord does not come into contact with hot surfaces.
- Do not leave unit in operation without an attendant.
- When not in use for long period unplug the appliance.

## INSTALLATION AND OPERATION:

- Check if voltage of your power system corresponds to the same specified on the machine label.
- Before using the appliance for the first time, turn the control knob to 300°C (572°F), close the lid and allow the appliance to heat for + / - 30 minutes. You will notice smoke appearing due to the internal insulation burning, which is normal.
- After 30 minutes heating, turn temperature control down to operating desired temperature, keep knob in this position until pilot light turns off, at this point the unit will be ready to be used.
- To turn off the unit turn knob completely towards left.

## CLEANING PROCEDURE

- Always ensure that the appliance is disconnected from the main power supply before cleaning.
- After appliance has cooled clean cooking surface and body using only a damp cloth. Never use water jet or immerse appliance in water.
- Wipe off appliance with a dry cloth and wait at least half an hour before re-connecting to main power out let.



Since 1911

# Mini Flat Sandwich Grill

## Instruction Manual



**Model: MFSGA-120**



Since 1911

[www.cecilware.com](http://www.cecilware.com)

**Cecilware Corporation** 43-05 20th. Avenue, LIC NY 11105  
Tel: 800.935.2211 / 718.932.1414 • Fax: 718.932.7860

**Cecilware Corporation** 43-05 20th. Avenue, LIC NY 11105  
Tel: 800.935.2211 / 718.932.1414 • Fax: 718.932.7860



Since 1911

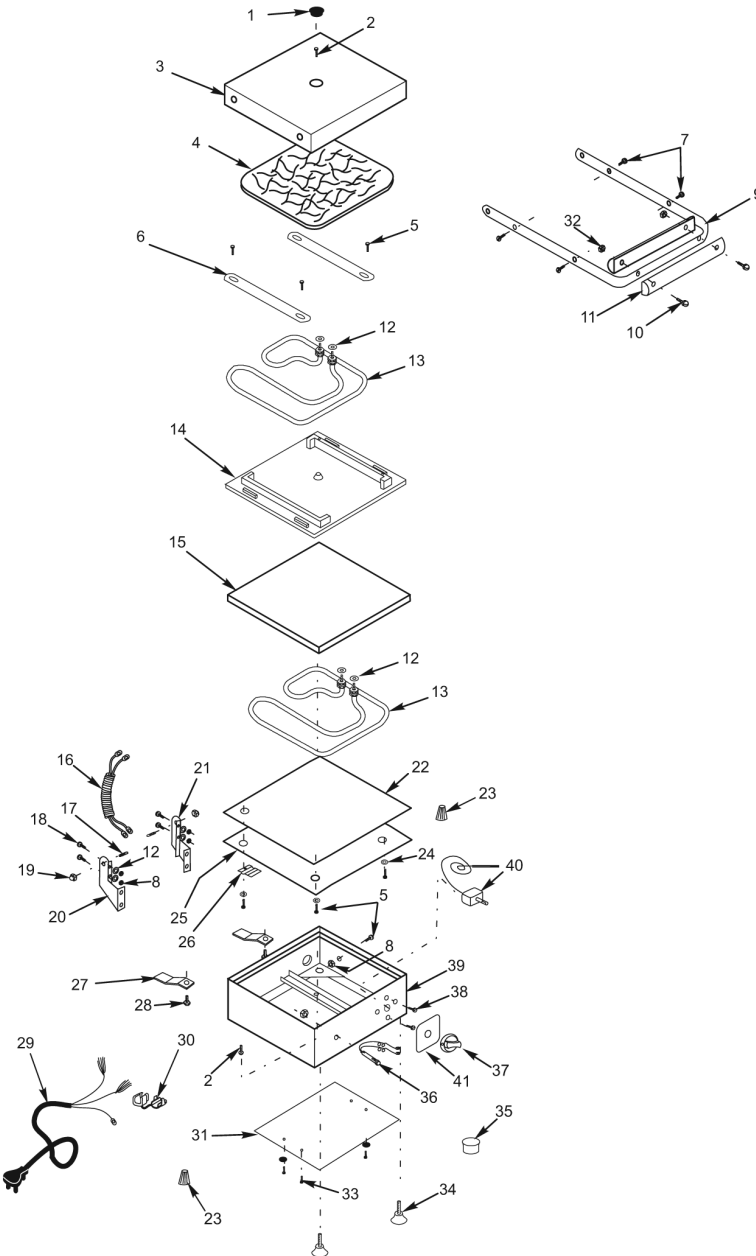
[www.cecilware.com](http://www.cecilware.com)

Printed 10/07 rev2

# Mini Flat Sandwich Grill

## Instruction Manual

Model: MFSGA-120



Item	Part #	Description
1	N/A	Rubber Cap
2	N/A	Screw (1/4")
3	N/A	Lid
4	N/A	Insulation
5	N/A	Screw (3/16")
6	N/A	Heating Fixer
7	N/A	Screw (4,8)
8	N/A	Nut (3/16")
9	04061	Handle Bar
10	N/A	Screw (5/32")
11	04018	Rubber Handle Protection
12	N/A	Washer (3/16")
13	04035	Heating Element
14	N/A	Upper Heating Plate
15	N/A	Lower Heating Plate
16	N/A	Wiring Protection
17	04020	Pin
18	N/A	Screw (3/16")
19	N/A	Nut (1/4")
20	04062	Right Hinge
21	04063	Left Hinge
22	N/A	Insulation
23	N/A	Wire Connector
24	N/A	Washer (3/16")
25	N/A	Lid Heating Plate
26	04038	Thermostat Bulb Retainer
27	N/A	Metal Foot
28	N/A	Screw (3/8")
29	04040	Plug & Cord
30	04097	Cord Retainer
31	N/A	Bottom Cover Plate
32	N/A	Nut (5/32")
33	N/A	Screw (2,9)
34	04017	Foot
35	04050	Grease Collector
36	04032	Pilot Light
37	04031	knob
38	N/A	Screw
39	N/A	Body
40	04051	Thermostat
41	N/A	Plate

Specifications	
Model	MFSGA-120
Volts	110
Watts	1100
Amps	10
Width Depth Height	10.7" 15.8" 7.9"
Ship Weight	15.8 lbs.

### Wiring Diagram

