

# INSTRUCTION MANUAL

\* Please read these instructions carefully before operation this appliance.

## IMPORTANT SAFEGUARDS

- When using electrical appliances, basic safety precautions should always be observed including the following:
- Before connecting your blender check if voltage of your power system corresponds to the same specified on the appliance.
- To protect against risk of electrical shock, do not put cord, plug, base or motor in water or other liquids.
- Never connect two or more appliances in the same plug.
- When not in use, unplug the blender.
- Avoid starting blender empty.
- Avoid contact with moving parts because blades are sharp. "Handle carefully".
- Keep hands and utensils out of container while blending to prevent the possibility of severe personal injury and or damage to blender. A plastic spatula may be used but must be used only when blender is "NOT RUNNING".
- Only remove the container when blender "COMPLETELY STOPPED".

## INSTRUCTIONS FOR USE

- Blender control is made by switch ( ON - OFF).
- It's recommend to cut food in small pieces and maintain food below container's frieze height avoid spilling.
- Place a small quantity of food with blender off. Turn on blender and add the rest of food that you want to process.
- When blender is running do not remove the lid.
- If blender action stops, turn blender off. Remove lid and use a plastic spatula to push mixture toward blades. Replace lid and continue.

## CLEANING PROCEDURE

- Clean container (cup) with liquid soap and water filling to half capacity.
- Turn on blender for some seconds.
- Turn off blender, empty the container and rinse it.
- Unplug blender clean body and external cup with a wet cloth.
- Do not use harsh detergent or chemical products for cleaning.
- Never use water jet or immerse appliance in water.
- Wipe off appliance with a dry cloth and wait at least half an hour before re-connecting to the main power outlet.
- If it's necessary to disassemble the knife and the bushing follow the instructions of the fig. 1.



Since 1911

# Floor Model 6½ Gallon Blender

## Instruction Manual



**Model: B25FM-120**



Since 1911

[www.cecilware.com](http://www.cecilware.com)

**Cecilware Corporation** 43-05 20th. Avenue, LIC NY 11105  
Tel: 800.935.2211 / 718.932.1414 • Fax: 718.932.7860

**Cecilware Corporation** 43-05 20th. Avenue, LIC NY 11105  
Tel: 800.935.2211 / 718.932.1414 • Fax: 718.932.7860



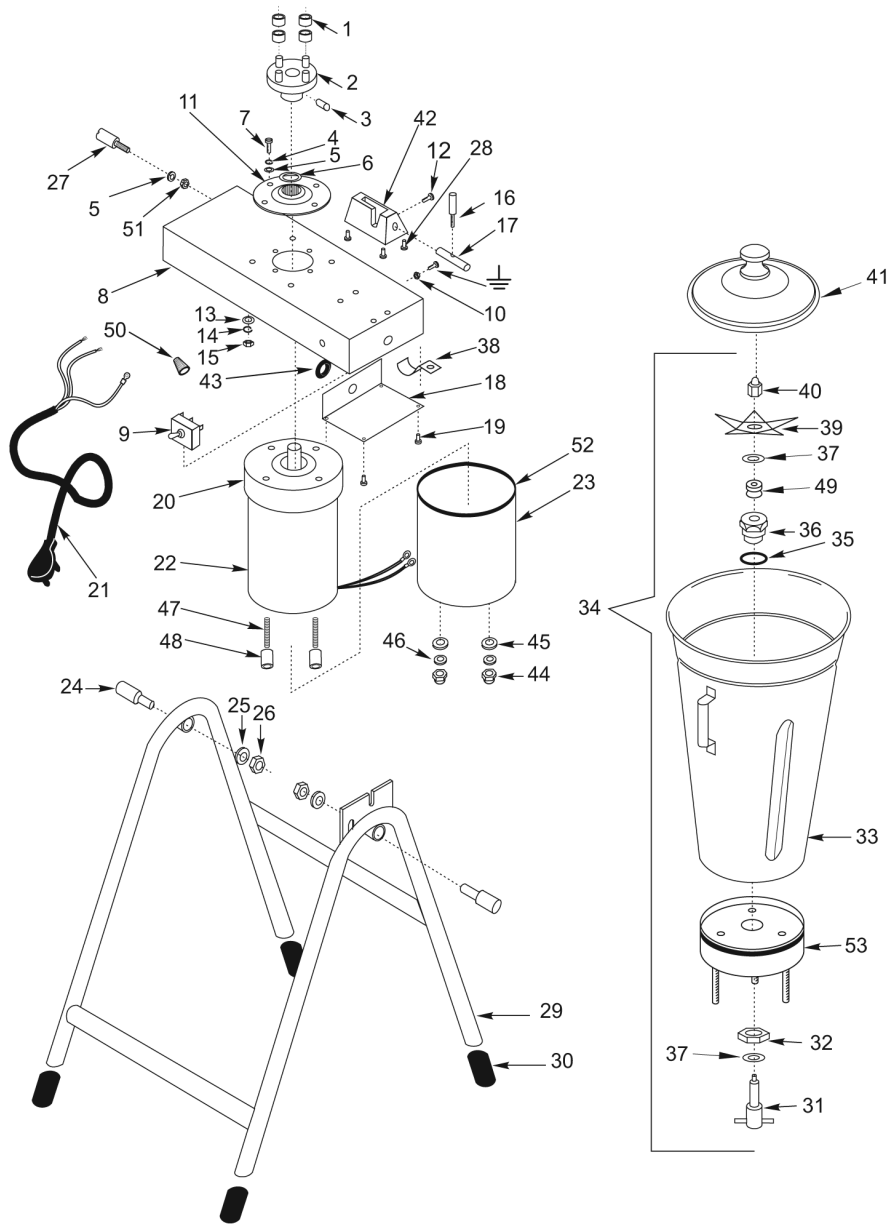
Since 1911

[www.cecilware.com](http://www.cecilware.com)

Printed 10/07 rev2

# Floor Model 6½ Gallon Blender

## Instruction Manual



| Item | Part # | Description          |
|------|--------|----------------------|
| 1    | 04099  | Polyurethane Ring    |
| 2    | 04109  | Shaft Adapter        |
| 3    | N/A    | Allen Screw 1/4"     |
| 4    | N/A    | Press Washer         |
| 5    | N/A    | Washer               |
| 6    | 04112  | Retainer             |
| 7    | N/A    | Screw 5/16"          |
| 8    | N/A    | Base                 |
| 9    | 04003  | Switch (On/Off)      |
| 10   | N/A    | Nut 3/16"            |
| 11   | 04107  | Container's Support  |
| 12   | N/A    | Screw 3/16"          |
| 13   | N/A    | Washer               |
| 14   | N/A    | Press Washer         |
| 15   | N/A    | Nut 1/4"             |
| 16   | 04083  | Latch Pin            |
| 17   | 04084  | Latch Body           |
| 18   | 04080  | Switch Cover         |
| 19   | N/A    | Screw                |
| 20   | 04106  | Motor Top Cover      |
| 21   | 04040  | Cord Connection      |
| 22   | 04078  | Motor                |
| 23   | 04079  | Motor Cover          |
| 24   | 04076  | Special Screw        |
| 25   | N/A    | Press Washer         |
| 26   | N/A    | Nut 1/2"             |
| 27   | N/A    | Rabbit               |
| 28   | N/A    | Screw 1/4"           |
| 29   | N/A    | Blender Support      |
| 30   | 04074  | Foot                 |
| 31   | 04075  | Shaft                |
| 32   | 04102  | Chuck Nut            |
| 33   | 04121  | Container            |
| 34   | 04122  | Container Assembly   |
| 35   | 04103  | O'ring               |
| 36   | 04105  | Bushing (Chuck)      |
| 37   | 04110  | Underfriction Washer |
| 38   | N/A    | Bracket              |
| 39   | 04111  | Impeller             |
| 40   | 04100  | Impeller Nut         |
| 41   | 04123  | Lid                  |
| 42   | N/A    | Latch Support        |
| 43   | 04098  | Rubber Ring          |
| 44   | N/A    | Nut                  |
| 45   | N/A    | Washer               |
| 46   | N/A    | Press Washer         |
| 47   | 04081  | Special Screw        |
| 48   | 04108  | Gap Base             |
| 49   | 04104  | Retainer             |

| Item | Part # | Description   |
|------|--------|---------------|
| 50   | 04097  | Strain Relief |
| 51   | N/A    | Nut 5/16"     |
| 52   | 04077  | Finishing     |
| 53   | N/A    | Base          |

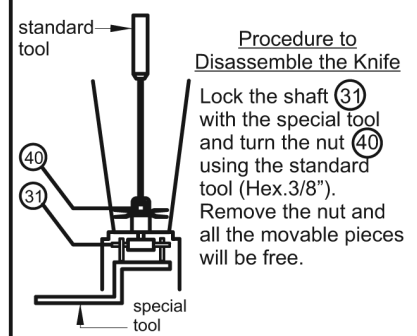
### Specifications

|             |           |
|-------------|-----------|
| Model       | B25FM-120 |
| Volts       | 110       |
| Watts       | 990       |
| Amps        | 9         |
| HP          | 1½        |
| Speed       | 3430 rpm  |
| Capacity    | 25 l      |
| Width       | 18.2"     |
| Depth       | 22½"      |
| Height      | 52.4"     |
| Ship Weight | 55.2 lbs. |

FIG.1

#### Procedure to Disassemble the Container

Unscrew and remove four nuts (15) located under the base (8).  
Remove the pitcher.



#### Procedure to Disassemble the Bushing

Using the special tool, unscrew the bushing nut (32) and remove the bushing (36).  
To reassemble proceed in inverse sequence.

#### Wiring Diagram

