

INSTRUCTION MANUAL

* Please read these instructions carefully before operation this appliance.

IMPORTANT SAFEGUARDS

- When using electrical appliances, basic safety precautions should always be observed including the following:
- Before connecting your blender check if voltage of your power system corresponds to the same specified on the appliance.
- To protect against risk of electrical shock, do not put cord, plug, base or motor in water or other liquids.
- Never connect two or more appliances in the same plug.
- When not in use, unplug the blender.
- Avoid starting blender empty.
- Avoid contact with moving parts because blades are sharp. "Handle carefully".
- Keep hands and utensils out of container while blending to prevent the possibility of severe personal injury and or damage to blender. A plastic spatula may be used but must be used only when blender is "NOT RUNNING".
- Only remove the container when blender "COMPLETELY STOPPED".

INSTRUCTIONS FOR USE

- Blender control is made by switch (ON - OFF).
- It's recommend to cut food in small pieces and maintain food below container's freeze height avoid spilling.
- Place a small quantity of food with blender off. Turn on blender and add the rest of food that you want to process.
- When blender is running do not remove the lid.
- If blender action stops, turn blender off. Remove lid and use a plastic spatula to push mixture toward blades. Replace lid and continue.

CLEANING PROCEDURE

- Clean container (cup) with liquid soap and water filling to half capacity.
- Turn on blender for some seconds.
- Turn off blender, empty the container and rinse it.
- Unplug blender clean body and external cup with a wet cloth.
- Do not use harsh detergent or chemical products for cleaning.
- Never use water jet or immerse appliance in water.
- Wipe off appliance with a dry cloth and wait at least half an hour before re-connecting to the main power outlet.
- If it's necessary to disassemble the knife and the bushing follow the instructions of the fig. 1.



Since 1911

Floor Model 4 Gallon Blender Instruction Manual



Model: B15FM-120



Since 1911

www.cecilware.com

Cecilware Corporation 43-05 20th. Avenue, LIC NY 11105
Tel: 800.935.2211 / 718.932.1414 • Fax: 718.932.7860

Cecilware Corporation 43-05 20th. Avenue, LIC NY 11105
Tel: 800.935.2211 / 718.932.1414 • Fax: 718.932.7860



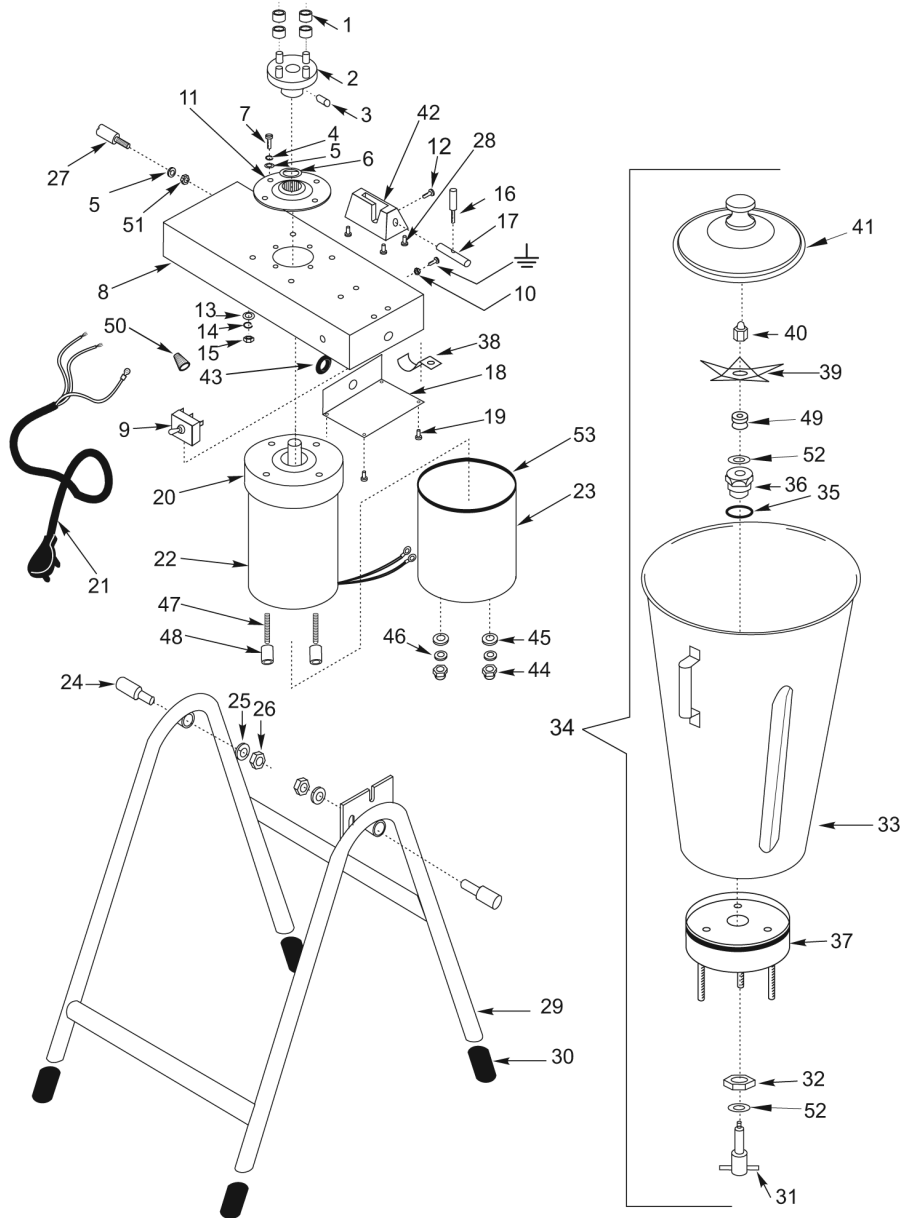
Since 1911

www.cecilware.com

Printed 10/07 rev2

Floor Model 4 Gallon Blender

Instruction Manual



Item	Part #	Description
1	04099	Polyurethane Ring
2	04109	Shaft Adapter
3	N/A	Allen Screw 1/4"
4	N/A	Press Washer
5	N/A	Washer
6	04112	Retainer
7	N/A	Screw 5/16"
8	N/A	Base
9	04003	Switch (On/Off)
10	N/A	Nut 3/16"
11	04107	Container's Support
12	N/A	Screw 3/16"
13	N/A	Washer
14	N/A	Press Washer
15	N/A	Nut 1/4"
16	04083	Latch Pin
17	04084	Latch Body
18	04080	Switch Cover
19	N/A	Screw
20	04106	Motor Top Cover
21	04040	Plug & Cord
22	04078	Motor
23	04079	Motor Cover
24	04076	Special Screw
25	N/A	Press Washer
26	N/A	Nut 1/2"
27	N/A	Rabbit
28	N/A	Screw 1/4"
29	N/A	Blender Support
30	04074	Foot
31	04075	Shaft
32	04102	Chuck Nut
33	04126	Container
34	04127	Container Assembly
35	04103	O'ring
36	04105	Bushing (Chuck)
37	N/A	Base
38	N/A	Bracket
39	04111	Impeller
40	04100	Impeller Nut
41	04128	Lid
42	N/A	Latch Support
43	04098	Rubber Ring
44	N/A	Nut
45	N/A	Washer
46	N/A	Press Washer
47	04081	Special Screw
48	04108	Gap Base
49	04104	Retainer

Item	Part #	Description
50	04097	Strain Relief
51	N/A	Nut 5/16"
52	04110	Underfriction Washer
53	04077	Finishing

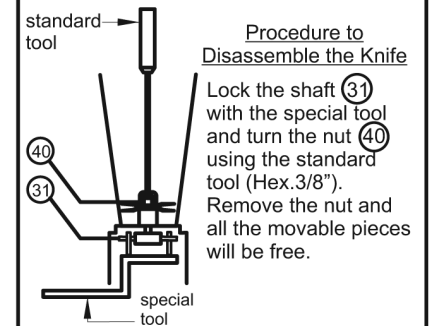
Specifications

Model	B15FM-120
Volts	110
Watts	1980
Amps	18
HP	1½
Speed	3430 rpm
Capacity	15 l
Width	18.2"
Depth	22½"
Height	52.4"
Ship Weight	52.8 lbs.

FIG.1

Procedure to Disassemble the Container

Unscrew and remove four nuts (15) located under the base (8).
Remove the pitcher.



Procedure to Disassemble the Knife
Lock the shaft (31) with the special tool and turn the nut (40) using the standard tool (Hex.3/8"). Remove the nut and all the movable pieces will be free.

Procedure to Disassemble the Bushing

Using the special tool, unscrew the bushing nut (32) and remove the bushing (36).
To reassemble proceed in inverse sequence.

Wiring Diagram

